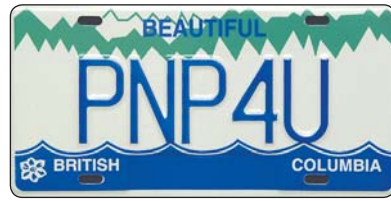


PASSENGER/MOTOR HOME (RS101)



PASSENGER/MOTOR HOME PERSONALIZED (RS016)



AMATEUR RADIO (RS010)



INDUSTRIAL VEHICLE (RS008)



FARM TRUCK (RS006)



FARM TRACTOR (RS007)



COMMERCIAL TRAILER (RS004)



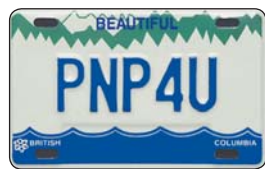
COMMERCIAL TRUCK (RS002)



MOTORCYCLE (RS003)



MOTORCYCLE PERSONALIZED (RS056)



RESTRICTED (RS024)



RESTRICTED (RS124)



UTILITY TRAILER (RS105)



TRAILER FLOATER (RS022)



MOTORCYCLE/TRAILER DEMONSTRATION (RS018)



QUARTERLY (LOGGING TRUCK) (RS051)



PRORATE - B.C. BASED (RS009)



MANUFACTURER (RS021)



TRANSPORTER (RS020)



DEMONSTRATION (RS017)



REPAIRER (RS019)



PASSENGER/MOTOR HOME VETERAN (RS057)



COMMERCIAL TRUCK VETERAN (RS058)



MOTORCYCLE VETERAN (RS059)



FOREIGN REPRESENTATIVE



FOREIGN REPRESENTATIVE TYPES:
DL 000A – Diplomatic-Level Representative (RS067)
CC 000A – Career Consular Officer (RS068)
HC 000A – Honorary Consular Officer (RS069)
CS 000A – Consular Staff (RS070)
SR 000A – Special Representative (RS071)

PASSENGER/COMMERCIAL COLLECTOR (RS049)



MOTORCYCLE COLLECTOR (RS050)



PASSENGER/COMMERCIAL COLLECTOR - MULTI-VEHICLE (RS052)



MOTORCYCLE COLLECTOR MULTI-VEHICLE (RS053)



ANTIQUÉ CAR



MOTORCYCLE ANTIQUE



SAMPLE PLATE FOR PLATE COLLECTORS



PASSENGER/MOTOR HOME 2010 WINTER GAMES (RS061)



COMMERCIAL TRUCK 2010 WINTER GAMES (RS062)



COMMERCIAL TRAILER 2010 WINTER GAMES (RS064)



FARM TRUCK 2010 WINTER GAMES (RS066)



MOTORCYCLE 2010 WINTER GAMES (RS063)



UTILITY TRAILER 2010 WINTER GAMES (RS065)

